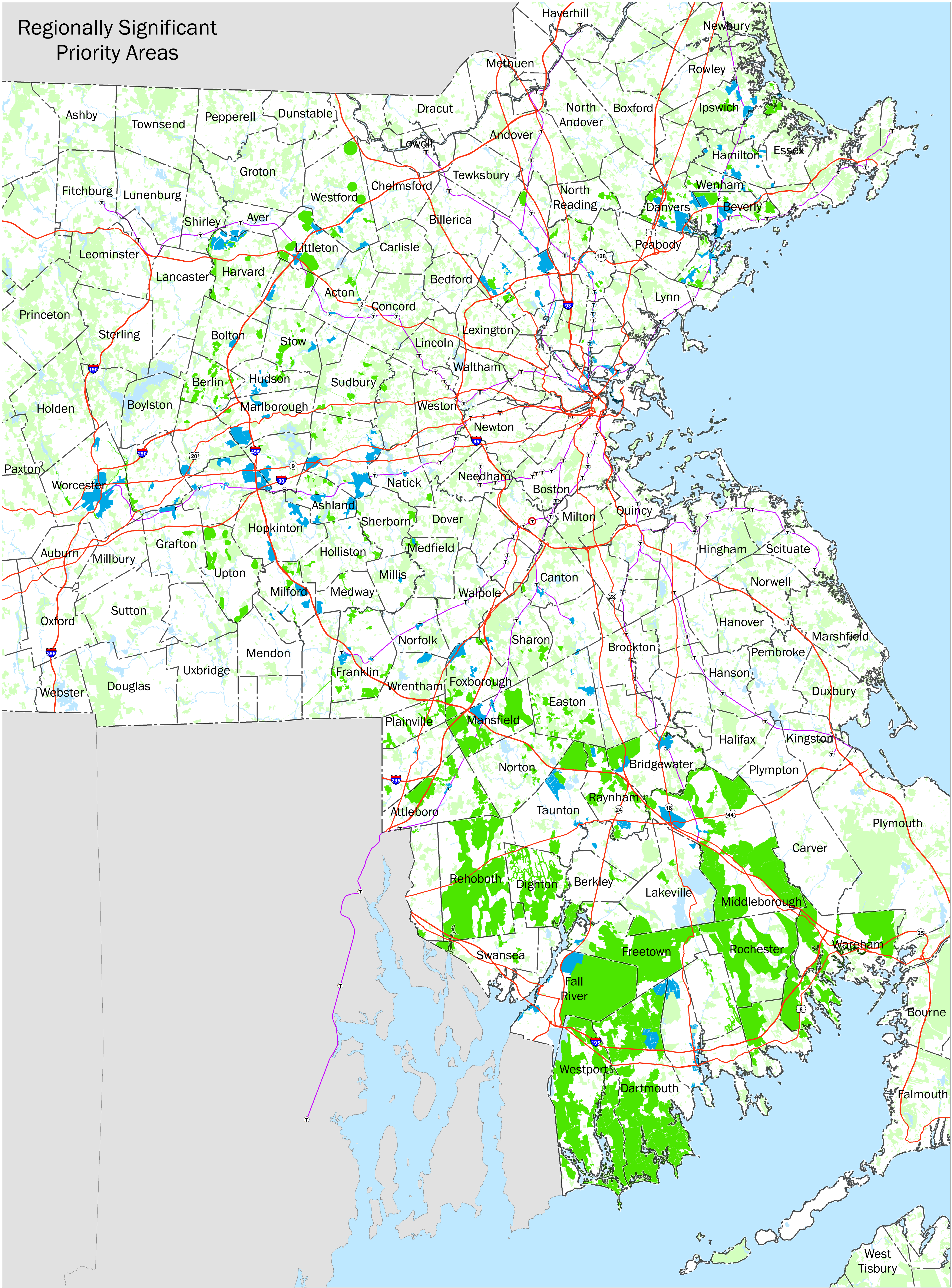
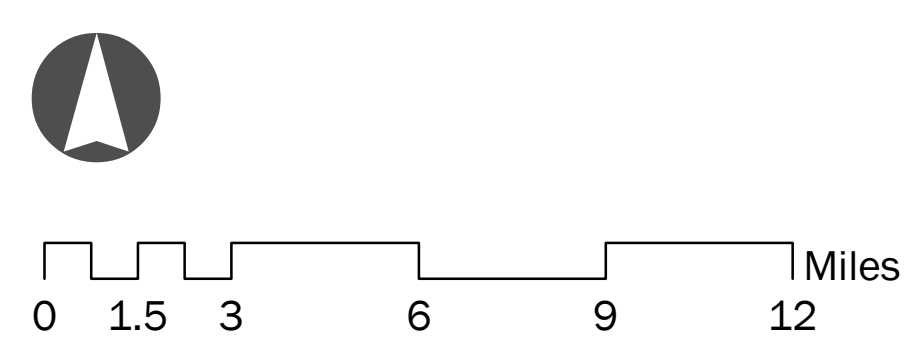


# Regionally Significant Priority Areas



- Regional Priority Areas - Development
- Regional Priority Areas - Preservation
- Commuter Rail Station
- Commuter Rail Line
- Major Roads
- Municipal Boundary
- Open Space



Data Sources:  
 Metropolitan Area Planning Council (MAPC),  
 Massachusetts Office of Geographic Information (MassGIS),  
 Massachusetts Department of Transportation (MassDOT),  
 Massachusetts Bay Transit Authority (MBTA)

November, 2014

