

# 2022 Federal Certification Review

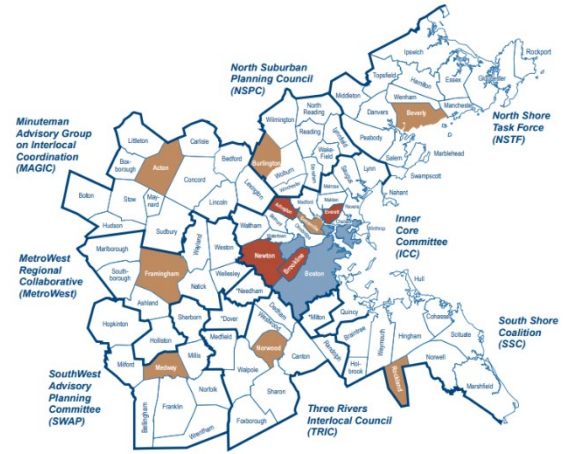
of the

## Boston Region Metropolitan Planning Organization

for the

Boston, MA-NH-RI

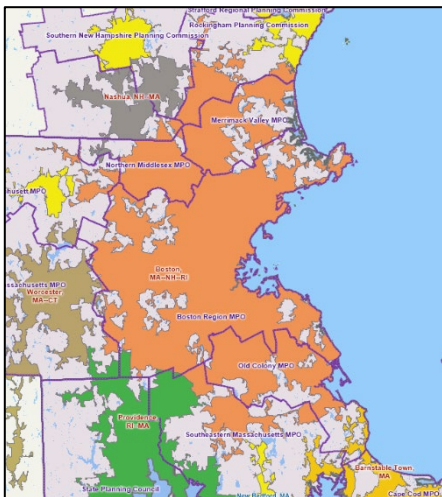
## Transportation Management Area



### Overview

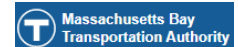
At least once every four years, the U.S. Department of Transportation (DOT) must certify that a Metropolitan Planning Organization (MPO) serving a Transportation Management Area (TMA) – an urbanized area with a population over 200,000 – is carrying out the metropolitan transportation planning process in adherence with federal requirements under [23 U.S.C. 134](#) and [49 U.S.C. 5303](#). The Federal Highway Administration (FHWA) and Federal Transit Administration (FTA) jointly conduct this review, make a certification determination, and produce a report that may include compliance issues (corrective actions), areas for improvement (recommendations), and/or notable practices (commendations). Based on these findings, the MPO will either be “certified,” “certified with conditions or restrictions,” or “not certified”.

### Boston, MA-NH-RI TMA



#### Served by:

- **Boston Region MPO** →
- Central Massachusetts MPO
- Merrimack Valley MPO
- Montachusett MPO
- Northern Middlesex MPO
- Old Colony MPO
- Southeastern Massachusetts MPO
- Rockingham Planning Commission (NH)
- Nashua Regional Planning Council MPO (NH)
- Southern New Hampshire Planning Commission (NH)
- Statewide Planning Council (RI)



**Elected Officials**

### Metropolitan Transportation Planning Process

A **continuous, cooperative, and comprehensive** (3-C) process that informs transportation decisions, including how projects are selected and prioritized for implementation within a region.

With limited funds, this is critical for prioritizing regional needs and identifying projects that best meet performance goals and objectives while providing public benefit. The process assists in developing a framework for the future transportation system.

### 3-C Planning Process

**Continuous** – Regularly addressing short-term needs and long-term regional goals

**Cooperative** – Involving all interested parties through a public participation process

**Comprehensive** – Multimodal in scope and consistent with other regional and statewide planning products and federal planning factors

## Four Key MPO Planning Documents

Please note that there are other federal requirements applicable to MPOs, but these are four core planning documents that frame the metropolitan transportation planning process.

### Public Participation Plan (PPP)

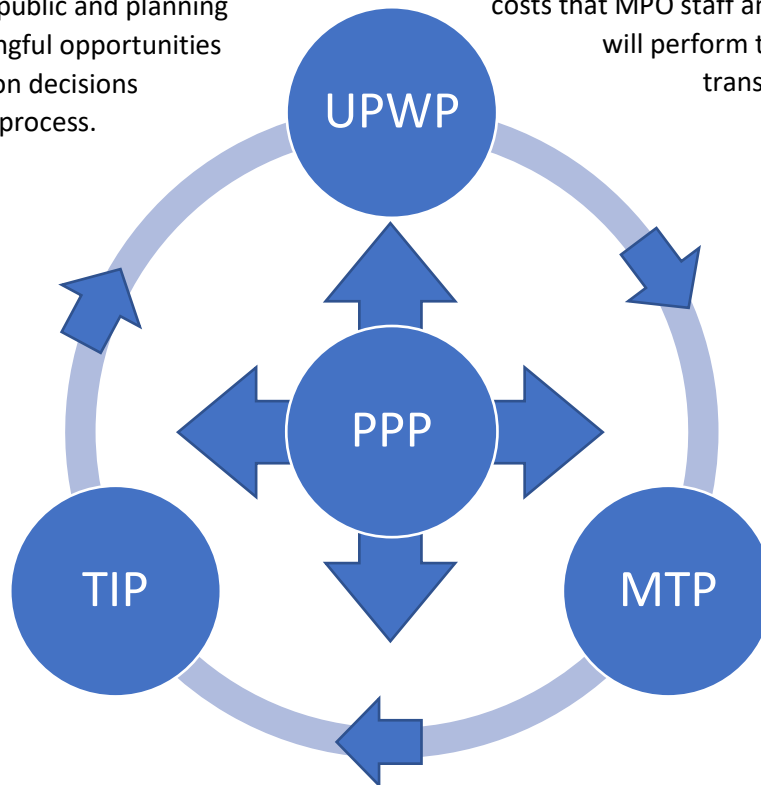
Documents public involvement strategies that provide the general public and planning stakeholders with meaningful opportunities to influence transportation decisions throughout the planning process.

*Updated as needed*

### Unified Planning Work Program (UPWP)

Lists transportation tasks, products, and associated costs that MPO staff and other responsible parties will perform to support the metropolitan transportation planning process.

*Updated annually*



### Transportation Improvement Program (TIP)

Identifies transportation investments, and associated costs, by year for implementation in the region over the next 4 to 5 years. Projects reflect investment priorities from the MTP and activities from the UPWP.

*Updated annually*

### Metropolitan Transportation Plan (MTP)

**Also known as a Long-Range Transportation Plan (LRTP)**

Establishes regional goals, strategies, projects, and priorities for an integrated intermodal transportation system that reflect current and future demand over at least 20 years.

*Updated every four years*

### How is the Process Going? We Want Your Input!

Written comments can be submitted by October 14, 2022 to:

**FHWA:** Cassie Ostrander, Program Development Team Leader  
[cassandra.ostrander@dot.gov](mailto:cassandra.ostrander@dot.gov) or  
55 Broadway, 10<sup>th</sup> Floor; Cambridge, MA 02142

**FTA:** Leah Sirmin, Community Planner  
[leah.sirmin@dot.gov](mailto:leah.sirmin@dot.gov) or  
55 Broadway, Suite 920; Cambridge, MA 02142

### Things to Think About...

What are your views on the planning process?

- What are some challenges?
- What are some strengths?

Do you feel you understand how the planning process works and how to get involved?

Do you feel like you have adequate opportunities to participate and be heard?