

CITY OF EVERETT

Sweetser Circle Improvements

Presented by

Jay Monty

City of Everett – Transportation Planner

Paul Nelson

Consultant Project Manager

Presented to

**Boston Metropolitan Planning
Organization**

Thursday, April 25, 2019



City of
Everett
Massachusetts

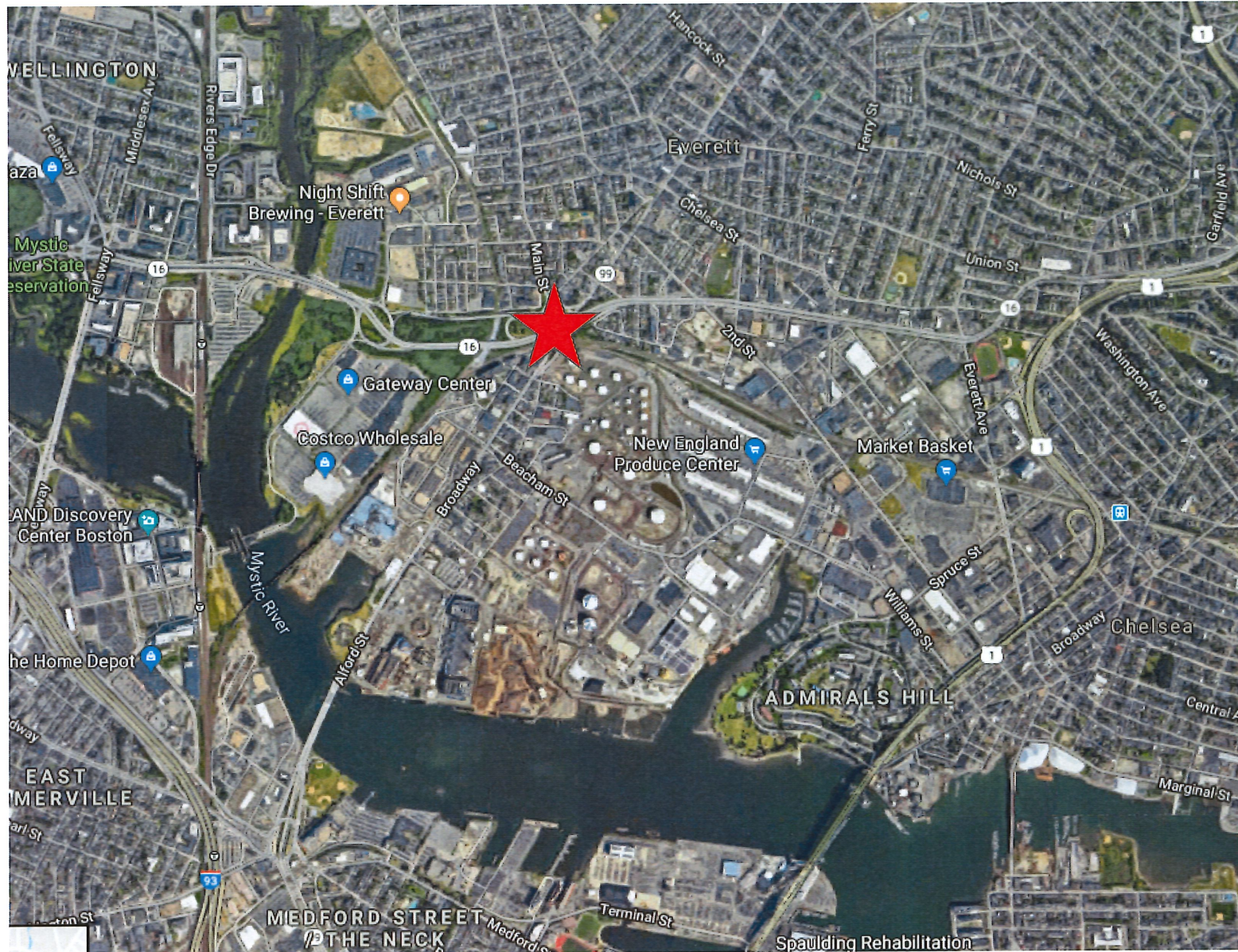


HOWARD STEIN HUDSON

Engineers + Planners

Sweetser Circle Overview

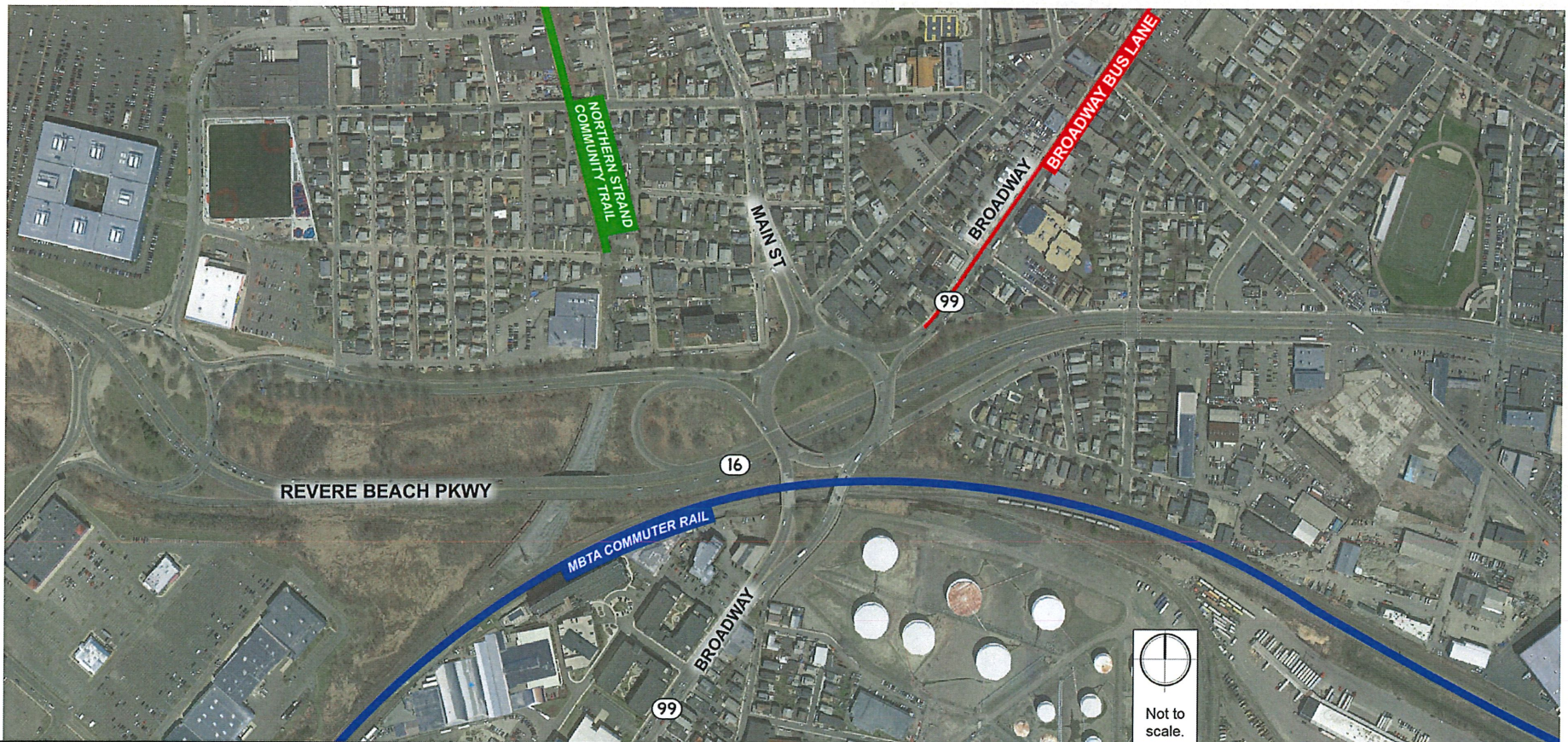
Engineers + Planners



Sweetser Circle Overview

Engineers + Planners

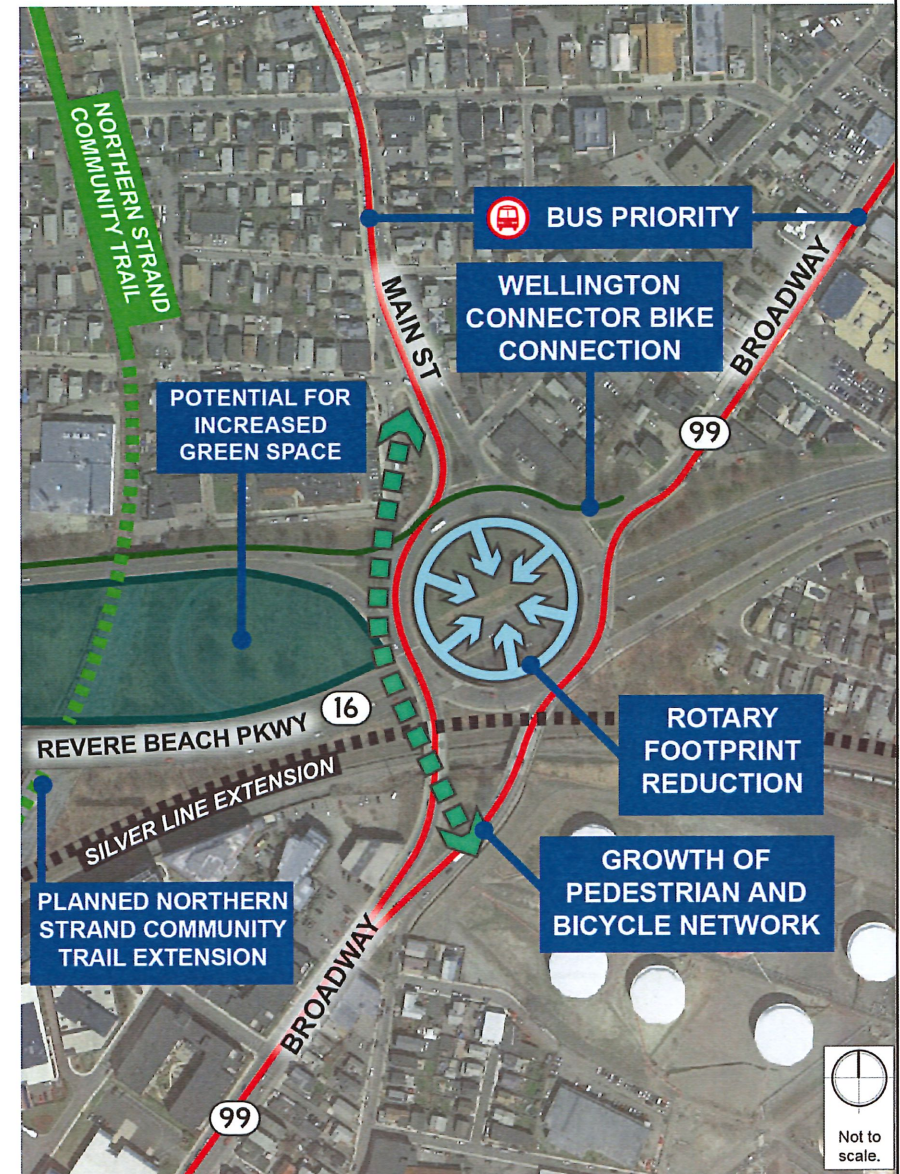
- Intersection of Main Street, Broadway, and Revere Beach Parkway (Route 16)
- Rotary constructed in 1956
- Experiences severe AM and PM congestion
- MPO-designated bottleneck
- Major barrier between Everett neighborhoods
- Major barrier to transit and active transportation modes.



Project Goals

Engineers + Planners

- Facilitate Bus Rapid Transit on Route 99
- Accommodate future Silver Line expansion
- Connect on-street bicycle facilities to Northern Strand Trail
- Reclaim 13 acres of inaccessible open/green space
- Connect Lower and Upper Broadway neighborhoods
- Improve pedestrian safety



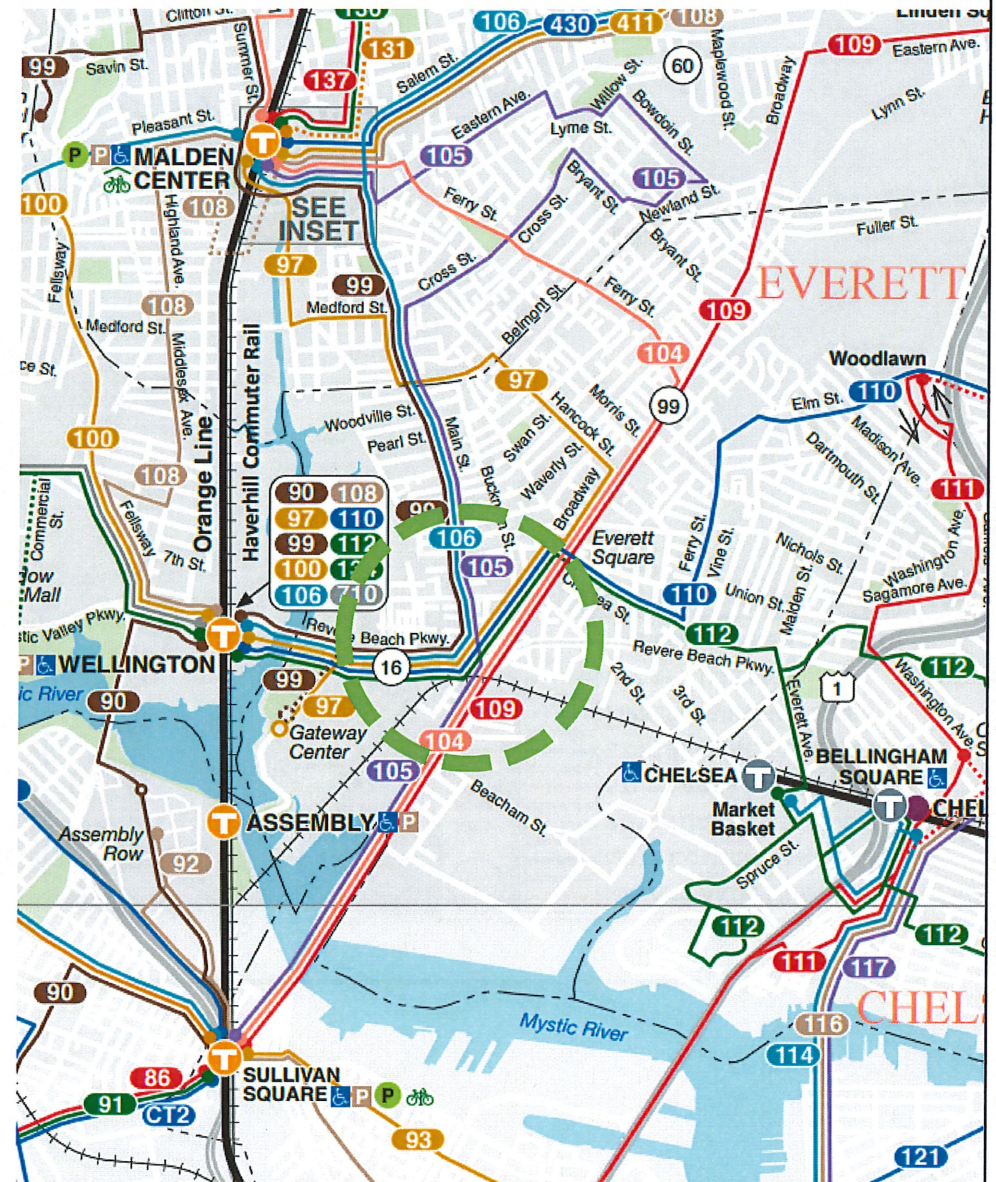
PROJECT CONTEXT:

Regional Connections

Engineers + Planners

■ Transit

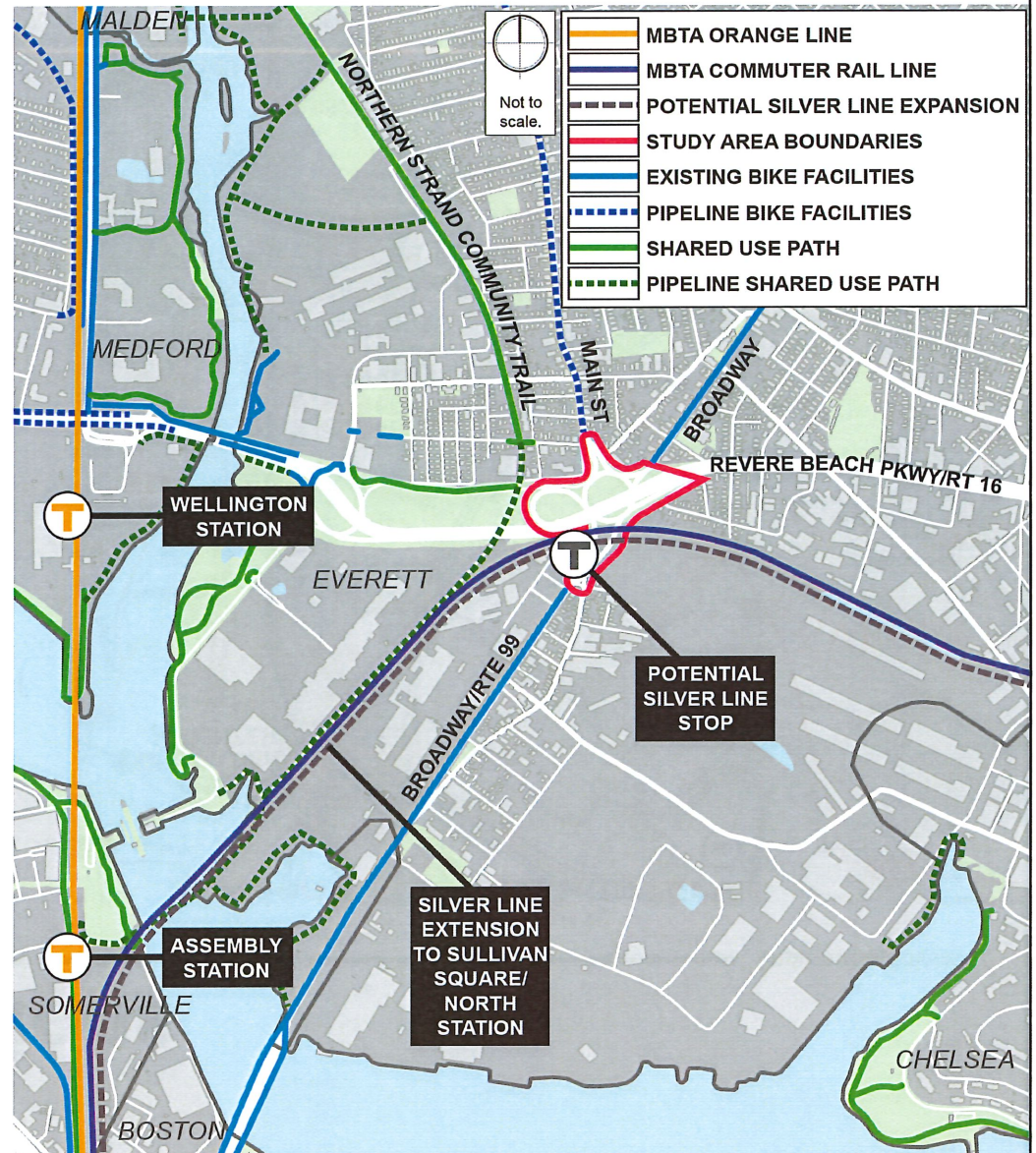
- Serves all bus routes running through Everett (8 total)
- Potential future stop on extension of Silver Line service
- 11,413 daily bus riders (2017)
- Dedicated bus lanes on Upper Broadway
- Planned BRT lanes on Lower Broadway
- Commuter Rail/Future Regional Rail
- No dedicated transit facilities possible with current geometry.



Regional Connections

■ Bicycles and Pedestrians

- Separated bike path recently constructed along northwest corner of Circle connecting Main Street and Santilli Circle Connector
- No other bike facilities within the Circle
- Bike lanes existing or planned on all approaches to the Circle
- Close proximity to Northern Strand Trail, but no existing connection
- Future Chelsea Greenway connection



Anticipated Development

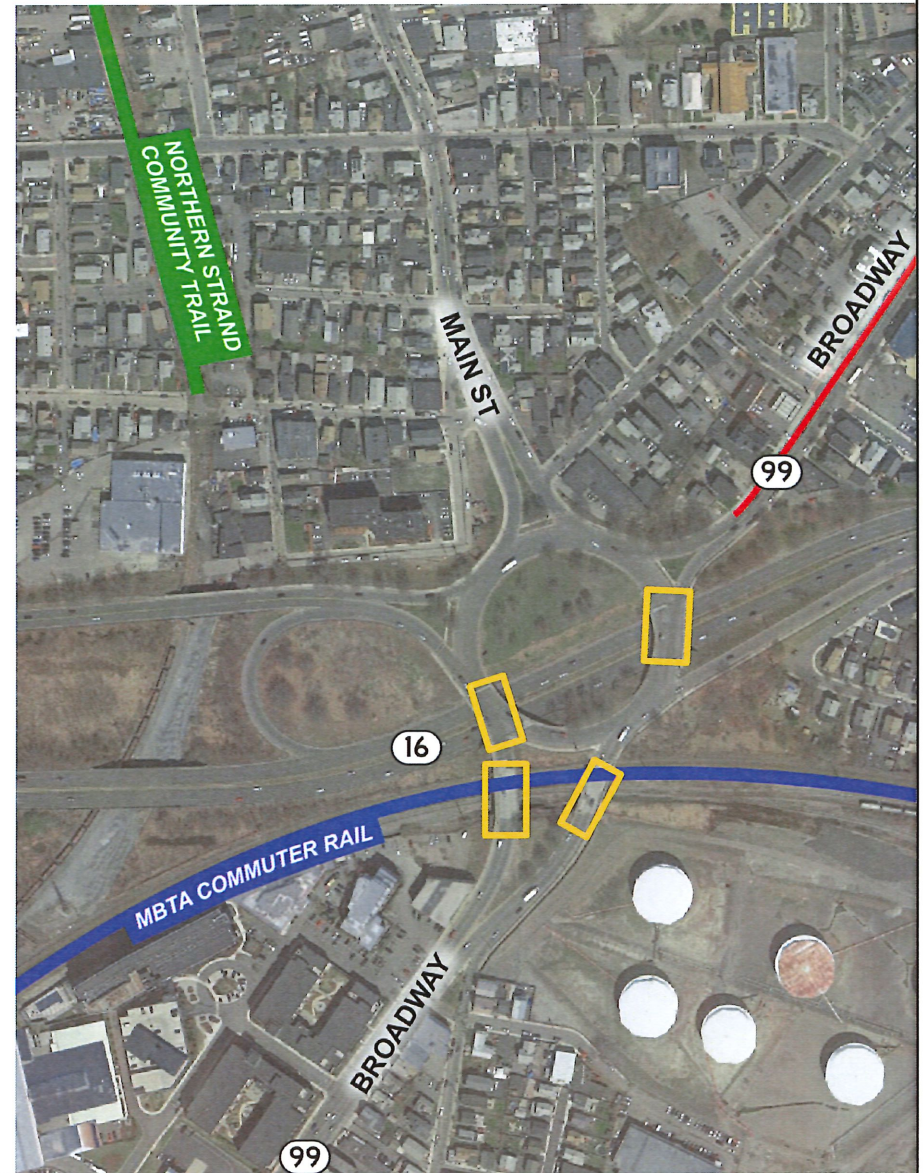
- **Recent and anticipated changes at or near circle:**
 - Completion of the Encore Boston Harbor Casino
 - 1,500 new residential units within 1-mile radius
 - *Batch Yard (200), Pioneer (300), Former "Woodwaste" site (650), Parkside Lofts (200), St Theresa (200)*

- **Shift in Lower Broadway and Route 16 corridor – increasing density, commercial development, and walkability**
 - Lower Broadway Economic Development District Rezoning
 - Commercial Triangle Economic Development District (CTEDD) – 97 acres
 - Commercial Triangle re-zoning (2019) from industrial to high-density mixed use.



Sweetser Circle Bridges

- MassDOT Project #608706 replaces the deck on 4 bridges at the Circle.
- 2 over Revere Beach Parkway (Route 16)
- 2 over MBTA Newburyport/Rockport Commuter Rail Line
- \$15.8 million estimated contract cost.

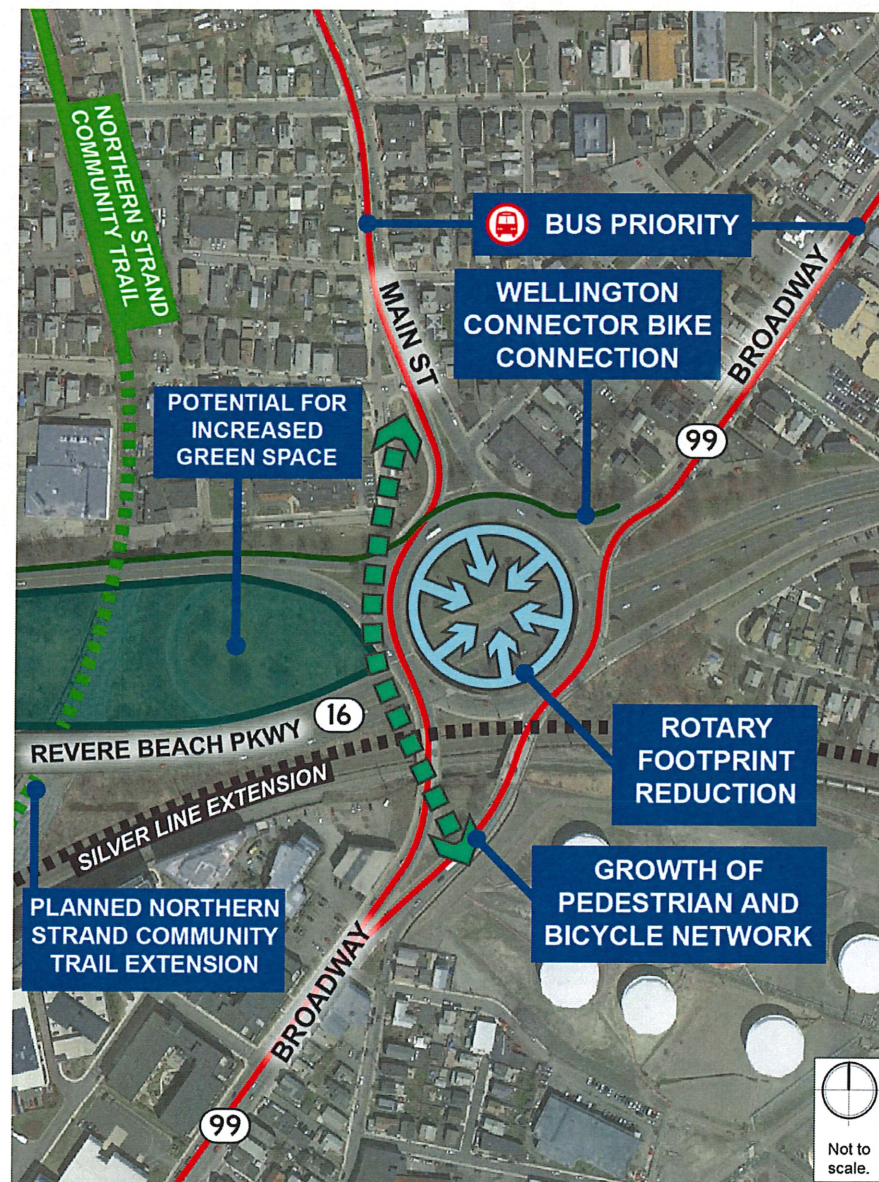


System Preservation and Opportunities

Engineers + Planners

■ Key piece of Everett infrastructure with potential for large impacts:

- Modernization and reconfiguration of outdated rotary into a safer intersection
- Connect existing and proposed dedicated BRT facilities for local buses and proposed Silver Line
- Provide protected bicycle facilities to connect with existing facilities on Broadway, Main Street and Northern Strand trail
- Improved pedestrian safety
- Unlock 13 acres of inaccessible DCR greenspace
- Reduced maintenance costs with reduction of elevated roadway sections



Relevant Studies and Plans

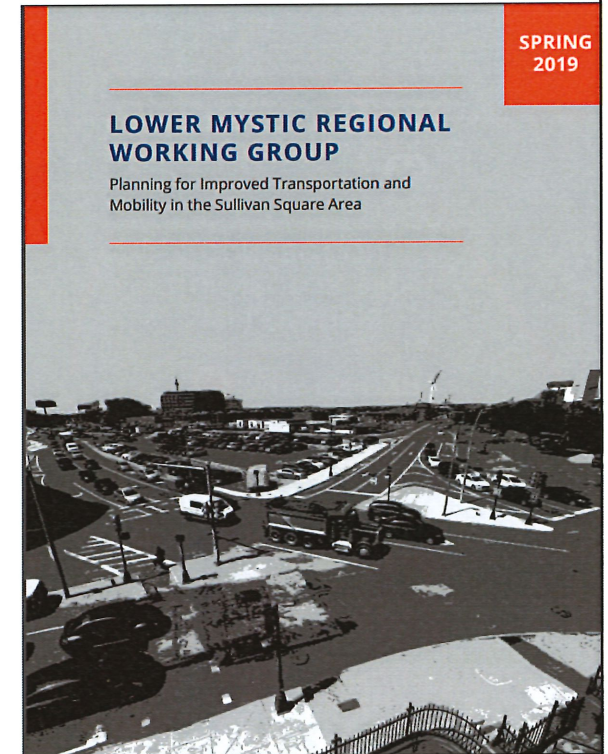
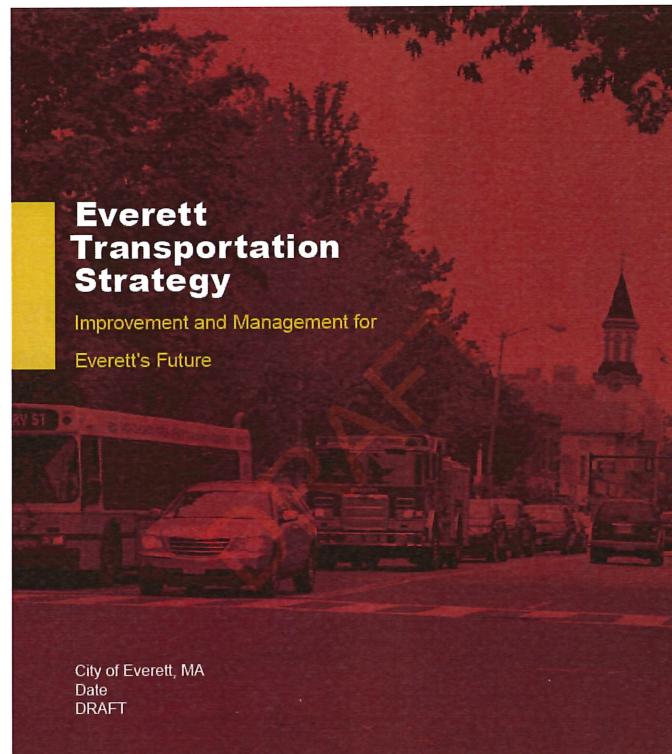
Engineers + Planners

- Proposed mobility improvements affect Sweetser Circle
 - Everett Transit Action Plan (2016)
 - Lower Mystic Regional Working Group (2019)
 - Everett Transportation Strategy (2019)



EVERETT TRANSIT ACTION PLAN Final Report

November 2016



Looking ahead

Engineers + Planners

- **Develop three concepts:**
 1. Re-build and upgrade existing circle as a modern roundabout
 2. Re-build and upgrade existing circle as a signalized intersection
 3. Explore feasibility of at-grade alternative

- **Convert bridge repair project into a transformative project that provides better non-auto connections.**
 - Broadway BRT
 - MBTA Silver Line
 - Northern Strand Trail
 - Wellington Connector Trail



HOWARD STEIN HUDSON

Questions?

Engineers + Planners

